



Futures

**CellPath**   
INNOVATION IN CELLULAR PATHOLOGY

# Pi Smart Cassette Printers

SMALL FOOTPRINT | FAST PRINTING | QUIET OPERATION



Marketed and Distributed by :

**FUTURES INDIA PVT. LTD.**

C-66, First Floor, DDA Shed, Okhla Industrial Area Phase-I, New Delhi-110020  
info@futuresindia.in | 011-42509668, 42509669



4-5 SECOND  
CASSETTE  
PRINTING  
CAPABILITY

## Pi Smart Cassette Printers

### On-demand cassette printing

The Pi Smart Cassette Printers are designed to increase laboratory automation and fit into LEAN workflows. Their small footprint, printing speed and low noise level makes them ideal for printing cassettes at the cut up bench, whilst the on-demand capability enables cassettes to be printed as they are needed, avoiding the risk associated with batch printing.

The Pi Printers allow the easy loading of multiple (*threaded*) cassettes into the hopper at one time. However, the Single Hopper Printer allows the user the ability to by-pass the hopper and drop in a single cassette proves very useful for producing extra blocks in the laboratory. As each individual cassette is dropped into the printer, the printer automatically indexes the block number so that the next correct block number is printed, with no additional typing or interaction with a computer required. Printing of an extra block only takes approximately 4 seconds.



An incorporated protocol function allows users to set a pre-defined number of cassettes against specific types of specimen type. All corresponding printing information can also be set.

A high-quality print-finish allows any 2D barcode to be kept as small as possible to ensure as much space is retained for printing human readable text. An extremely good print resolution allows a 10mm x 5mm 2D datamatrix barcode to contain up to 170 individual characters (*70% more than any other cassette printer in the market*), allowing users to include more instructions or information with the cassette/block e.g. embedding instructions or a greater amount of patient or test information. It also means that users can reduce the amount of manual data entry, as more information can be transferred from the block by simply scanning the 2D barcode.



The built-in scanner alongside smart software, also allows users to scan data from a request form or tissue pot barcode and utilise this data to print the cassettes, further reducing the risk of labelling errors.

An intuitive full-colour touch screen provides all the functionality required to print cassettes, design layouts, automate printing and connect to Laboratory Information Systems (LIS).

The user interface allows the creation of single or multiple cassettes with just a few clicks. No PC is required to operate the printer, however if LIS or other connection is required, it can be connected to a PC via USB or Ethernet. Text or image data can be imported from an LIS system either directly or using the Windows driver supplied with the printer.

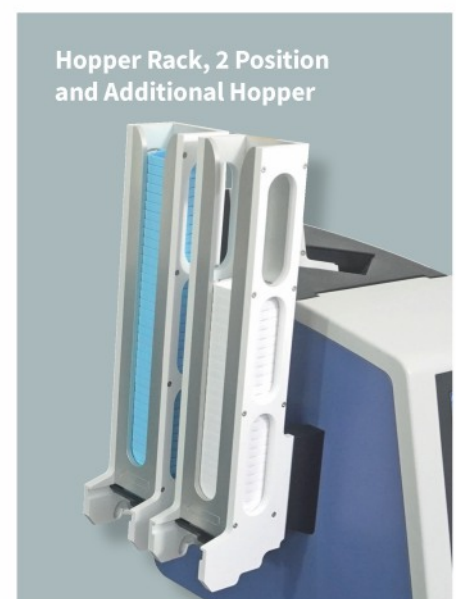
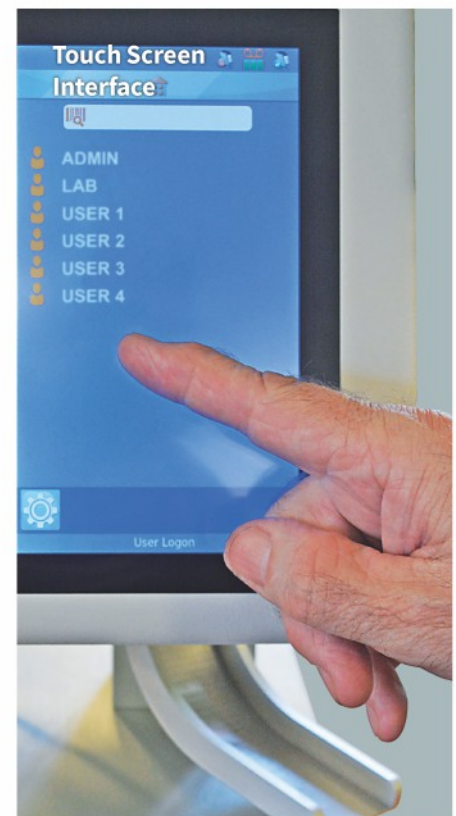
The cassette printers can be set up so access is obtained through the use a pin or name badge barcode. Subsequent user initials can be automatically printed onto the cassette if required. The user login and logout plus all scans and prints are recorded within the printer providing valuable data, which can be saved to a USB stick.

Specifications		
Item Code:	Single Hopper	JAP-1000-00A
Item Code:	Multi Hopper	JAP-2000-00A
Dimensions (including hoppers):	Single Hopper	307mm x 177mm x 575mm (d x w x h)
	Multi Hopper	381mm x 279mm x 575mm (d x w x h)
Weight:	Single Hopper	7kg
	Multi Hopper	9.8kg
Input Voltage:	240/110V Power Adaptor 24V DC	
Print Resolution:	300dpi	
Media Type:	Thermal Transfer Tape	
Media Capacity:	>12,000 Prints Per Roll	
Connection:	2 x USB A, 1 x USB B and Ethernet CAT5	

## Accessories

Item Code	Description	Quantity
JAP-1000-00B	Printer Ribbon	1
JAP-1000-00C	Additional Hopper	1
JAP-1000-00D	Printhead Cleaning Kit (Box/25)	1
JAP-1000-00E	Screen Protector	1
JAP-1000-00F	Power Supply	1
JAP-1000-00G	UK Mains Lead	1
JAP-1000-00H	Replacement Box with Foam	1
JAP-1000-00I	Replacement Printhead (Installed)	1
JAP-1000-00J	Hopper Rack, 2 Position	1
JAP-1000-00K	Cassette Collection Tray	1
JAP-1000-00L	Mini Keyboard for Pi Printer	1
JAP-1000-00M	Anti Microbial for Mini Keyboard	1
JAP-1010-00A	1 Year Service Contract	1
JAP-1050-00A	5 Year Service Contract	1

CellPath Ltd is a UK distributor of the Pi Smart printers, which are manufactured by Pyramid Innovation Ltd.



## Pi Cassettes

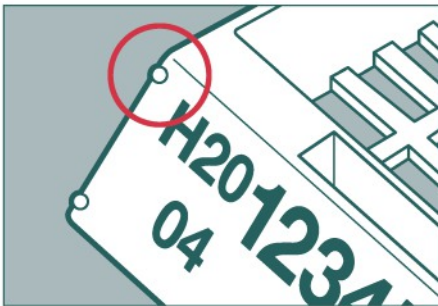
### Specially Adapted Surface Optimises the Print Quality



CellPath's Pi Cassette is the validated cassette for use with the Pi Printer. It is supplied with a separate, plastic lid, which is attached via a hinge that enables easy attachment and removal.



The Pi Cassette is manufactured from an advanced acetal polymer which, when combined with a true writing surface and a precise roughness, provides an optimised surface for the printing of high-quality text and 2D data matrix barcodes. When used with the Pi Printers, a small 5mm x 5mm 2D datamatrix barcode can contain up to 85 individual characters, allowing users to include more instructions or information with the cassette/block for use further downstream in the histology workflow.

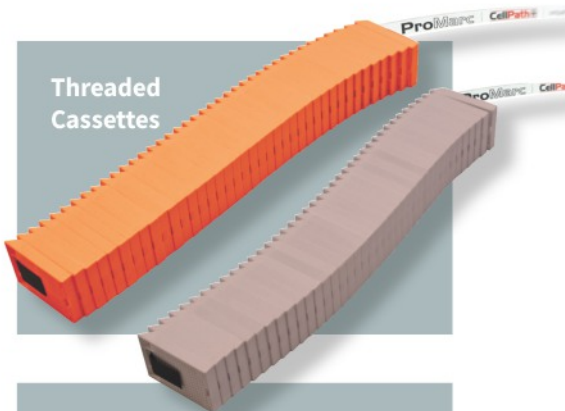


It also possesses four raised pips in the corners of the print face to protect the printed surface during dewaxing, while enabling the surface to be cleared of wax. The pips act to hold the print face off the surface of the heated wax trimmer but keep it close enough for the paraffin wax to melt in the usual way.

Cassettes are supplied in threads to allow for quick and easy loading into the Pi Printer. They are fully compatible with the Supa Mega Mothership Cassette and are validated for use as an ID cassette.

### KEY BENEFITS

- 1 Precisely engineered printing surface
- 2 Increased reagent flow
- 3 High rigidity and stability
- 4 Compatible with the Supa Mega Mothership Cassettes
- 5 Various colours available



Threaded Cassettes

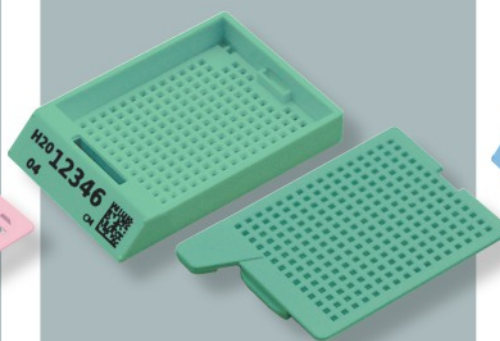
#### Pi Slotted Cassette with Lid

*(Incorporating 1.1mm wide slots)*



#### Pi Biopsy Cassette with Lid

*(Incorporating 0.9mm<sup>2</sup> apertures)*



#### Pi Microbiopsy Cassette with Lid

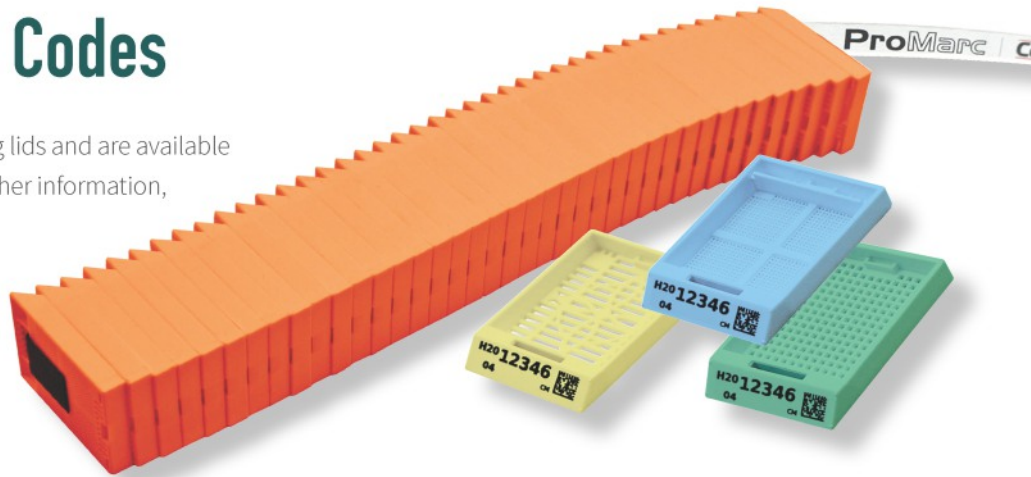
*(Incorporating 0.38mm<sup>2</sup> apertures)*



## Pi Cassettes Item Codes

All cassettes come threaded with matching lids and are available in a choice of 15 colours. If you require further information, please contact our Customer Care Team on +44 (0)1686 611333.

The Pi Cassettes are available in a full range of 15 colours



## Six Hopper Carousel

Recommended for Larger Laboratories

Designed for either on-demand or batch printing the six hopper unit has a similar footprint to the single hopper unit, and is still small enough to operate at a cut-up workstation. The user can select cassettes from any hopper via the user interface, or automatically by analysing incoming image or text-based data.



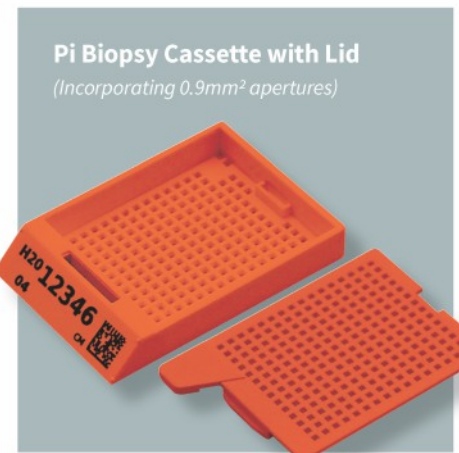
## Pi Slotted Cassettes

Item Code	Description	Quantity	Colour
EAM-0202-72B	Pi Slotted Cassette, Threaded with Lid	2000	White
EAM-0204-72B	Pi Slotted Cassette, Threaded with Lid	2000	Green
EAM-0205-72B	Pi Slotted Cassette, Threaded with Lid	2000	Grey
EAM-0206-72B	Pi Slotted Cassette, Threaded with Lid	2000	Blue
EAM-0207-72B	Pi Slotted Cassette, Threaded with Lid	2000	Orange
EAM-0208-72B	Pi Slotted Cassette, Threaded with Lid	2000	Pink
EAM-0209-72B	Pi Slotted Cassette, Threaded with Lid	2000	Yellow
EAM-0210-72B	Pi Slotted Cassette, Threaded with Lid	2000	Red
EAM-0211-72B	Pi Slotted Cassette, Threaded with Lid	2000	Peach
EAM-0212-72B	Pi Slotted Cassette, Threaded with Lid	2000	Tan
EAM-0215-72B	Pi Slotted Cassette, Threaded with Lid	2000	Brown
EAM-0216-72B	Pi Slotted Cassette, Threaded with Lid	2000	Dark Blue
EAM-0218-72B	Pi Slotted Cassette, Threaded with Lid	2000	Dark Green
EAM-0219-72B	Pi Slotted Cassette, Threaded with Lid	2000	Lavender
EAM-0220-72B	Pi Slotted Cassette, Threaded with Lid	2000	Turquoise



## Pi Biopsy Cassettes

Item Code	Description	Quantity	Colour
EAM-0302-72B	Pi Biopsy Cassette, Threaded with Lid	2000	White <input type="checkbox"/>
EAM-0304-72B	Pi Biopsy Cassette, Threaded with Lid	2000	Green <input type="checkbox"/>
EAM-0305-72B	Pi Biopsy Cassette, Threaded with Lid	2000	Grey <input type="checkbox"/>
EAM-0306-72B	Pi Biopsy Cassette, Threaded with Lid	2000	Blue <input type="checkbox"/>
EAM-0307-72B	Pi Biopsy Cassette, Threaded with Lid	2000	Orange <input type="checkbox"/>
EAM-0308-72B	Pi Biopsy Cassette, Threaded with Lid	2000	Pink <input type="checkbox"/>
EAM-0309-72B	Pi Biopsy Cassette, Threaded with Lid	2000	Yellow <input type="checkbox"/>
EAM-0310-72B	Pi Biopsy Cassette, Threaded with Lid	2000	Red <input type="checkbox"/>
EAM-0311-72B	Pi Biopsy Cassette, Threaded with Lid	2000	Peach <input type="checkbox"/>
EAM-0312-72B	Pi Biopsy Cassette, Threaded with Lid	2000	Tan <input type="checkbox"/>
EAM-0315-72B	Pi Biopsy Cassette, Threaded with Lid	2000	Brown <input type="checkbox"/>
EAM-0316-72B	Pi Biopsy Cassette, Threaded with Lid	2000	Dark Blue <input type="checkbox"/>
EAM-0318-72B	Pi Biopsy Cassette, Threaded with Lidd	2000	Dark Green <input type="checkbox"/>
EAM-0319-72B	Pi Biopsy Cassette, Threaded with Lid	2000	Lavender <input type="checkbox"/>
EAM-0320-72B	Pi Slotted Cassette, Threaded with Lid	2000	Turquoise <input type="checkbox"/>



## Pi Micro Biopsy Cassettes

Item Code	Description	Quantity	Colour
EAM-0402-72B	Pi Micro Biopsy Cassette, Threaded with Lid	2000	White <input type="checkbox"/>
EAM-0404-72B	Pi Micro Biopsy Cassette, Threaded with Lid	2000	Green <input type="checkbox"/>
EAM-0405-72B	Pi Micro Biopsy Cassette, Threaded with Lid	2000	Grey <input type="checkbox"/>
EAM-0406-72B	Pi Micro Biopsy Cassette, Threaded with Lid	2000	Blue <input type="checkbox"/>
EAM-0407-72B	Pi Micro Biopsy Cassette, Threaded with Lid	2000	Orange <input type="checkbox"/>
EAM-0408-72B	Pi Micro Biopsy Cassette, Threaded with Lid	2000	Pink <input type="checkbox"/>
EAM-0409-72B	Pi Micro Biopsy Cassette, Threaded with Lid	2000	Yellow <input type="checkbox"/>
EAM-0410-72B	Pi Micro Biopsy Cassette, Threaded with Lid	2000	Red <input type="checkbox"/>
EAM-0411-72B	Pi Micro Biopsy Cassette, Threaded with Lid	2000	Peach <input type="checkbox"/>
EAM-0412-72B	Pi Micro Biopsy Cassette, Threaded with Lid	2000	Tan <input type="checkbox"/>
EAM-0415-72B	Pi Micro Biopsy Cassette, Threaded with Lid	2000	Brown <input type="checkbox"/>
EAM-0416-72B	Pi Micro Biopsy Cassette, Threaded with Lid	2000	Dark Blue <input type="checkbox"/>
EAM-0418-72B	Pi Micro Biopsy Cassette, Threaded with Lid	2000	Dark Green <input type="checkbox"/>
EAM-0419-72B	Pi Micro Biopsy Cassette, Threaded with Lid	2000	Lavender <input type="checkbox"/>
EAM-0420-72B	Pi Micro Biopsy Cassette, Threaded with Lid	2000	Turquoise <input type="checkbox"/>



### More information

Contact our Customer Care Team  
for further information on +44 (0)1686 611333



**DISCLAIMER:** CellPath Ltd assumes no responsibility or liability for any errors or omissions in the content of this publication. The information contained in this publication is provided on an "as is" basis with no guarantees of completeness, accuracy, usefulness or timeliness.

## Notes

Lined area for notes with a large red hexagonal graphic in the background.

**CellPath Ltd**, 80 Mochdre Enterprise Park, Newtown, Powys, SY16 4LE, UK  
T: +44 (0)1686 611333 | E: [sales@cellpath.com](mailto:sales@cellpath.com) | [cellpath.com](http://cellpath.com)

